

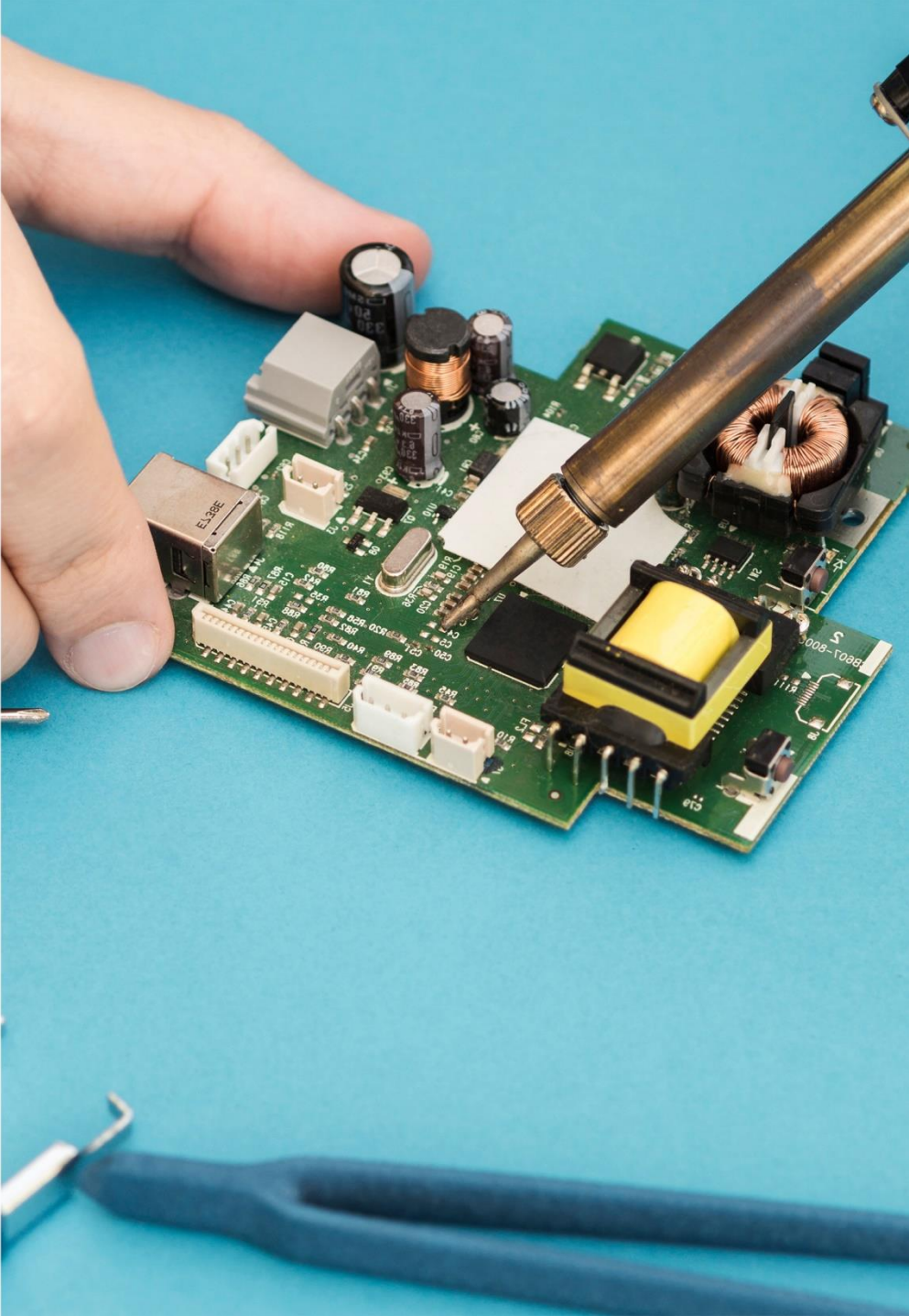
EMBERTON™

INVEST FOR YOUR GUEST.



CONTENTS

ABOUT US	3
VISION & MISSION STATEMENT	4
OUR DEVELOPMENT	5
OUR PHILOSOPHY	6
PROJECT REFERENCES	7 - 9
OUR SAFETY CERTIFICATIONS	10
BUILDING ON SUCCESS	11
INTELLECTUAL PROPERTY	12
OUR APPLIANCE LINES	13
DESIGN & DEVELOPMENT	14
PRODUCT & QUALITY CONTROL	15
GLOBAL DISTRIBUTION NETWORK	16



ABOUT US



35 years of expertise

Trusted in hotel rooms all over the world.

Emberton is a design and manufacturing company focused on providing electrical appliances and related products of the highest quality to the hotel and hospitality industries.

Emberton was established in London in the 1980's as a supplier of quality hotel products (to British hotels). Building upon the success in Europe, the company expanded its operations across Asia and the Middle East in the 1990's and now, a thoroughly international company, with operations and a client base spread across continents.

Emberton's suite of innovative, safe and superior quality electrical products has won the loyalty of customers across continents. Despite it's success, the brand maintains a relentless focus in finding new ways to create better and safer electrical products.

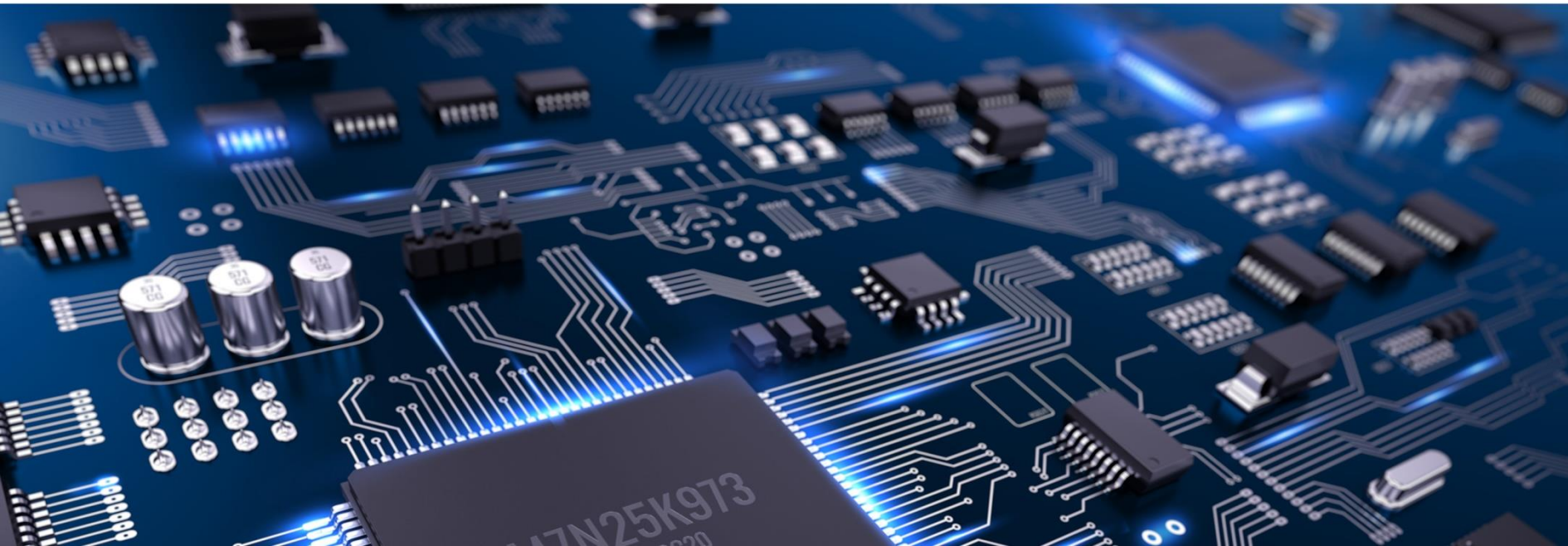
VISION & MISSION STATEMENT

"Investing in electrical engineering & technology to improve the safety, reliability & performance of electrical appliances worldwide"

Be the most competitive and efficient, supported by re-investment and commitment to training, research and quality control infrastructure.

Provide creative, innovative and robust guest products, featuring the latest available technology.

Provide an environment of continual growth, prosperity and improvement for employees, partners and shareholders, whilst ensuring mutual advancement, long term partnerships and benefit for clients and suppliers.



OUR DEVELOPMENT

Emberton - a tranquil English village where the founders were brought up.

1986

Emberton's pioneering year of supplying in-room hotel products in London, UK.

1995

Establishment of a distribution centre serving the European region, Emberton Europe BV in Rotterdam, Netherlands.

1996

Ventured in Asia with operations launched via Emberton Hong Kong and Malaysia.

2002

Strengthened presence in Asia with the incorporation of a technical base, testing, and inspection centre in Ningbo, China.

2010

Encouraging growth of North American market through Oasis Products LLC, USA, acting as Emberton's import centre.

2011

Solidifying technical capabilities through establishment of Emberton's Design & Engineering Centre in New Romney, Kent, United Kingdom.

Present

Successful ventures in 80 countries across all continents, with onward focus on innovation and constant pursuit for outstanding technology – efficiently under the Emberton brand.

OUR PHILOSOPHY

QUESTION EVERYTHING

We don't design for the hotel industry. We design with them. From initial design to final testing, we submit our products to a panel of experienced hotel and hospitality professionals.

Offering the lessons of decades in the industry, this panel ensures every last detail of every Emberton product is interrogated and questioned to deliver optimum performance.



The result is a suite of Emberton products built to meet the challenges of hotel staff and exceed the expectations of guests. Our Development and Production department have one rule.

'Question everything. Find new ways of making better products.'

PROJECT REFERENCES



Puro Hotel Group
Polski Holding Hotelowy Group
Resorty Górskie Group
Accor Hotel Group
Raddison Hotel Group
Intercontinental Warsaw
Marriott Warsaw
Bachleda Residence, Zakopane
Holiday Inn, Kensington
Ibis Style Hotel, Warszawa
Hyatt Place Heathrow Hotel, London
Ibis Style Hotel, Bucharest
Hampton by Hilton, Gdansk
Residence Inn, Kensington
Residence Inn London Bridge, Bermondsey
Puro Hotel Group, Warszawa
Hyatt Regency Hotel, Birmingham
Holiday Inn Hotel, Stratford
Arche Hotel Group, Warszawa
K West Hotel and Spa, London
Staybridge Suites, Stratford

Westin Warsaw
Marriott Sopot
Sofitel Sopot
Raffels Warsaw
Hyat Warsaw
Hilton Warsaw
Hilton Gdańsk
Diament Hotel Group , Katowice
Nosalowy Park , Zakopane
Starwood Apartment Earls Court, London
Staycity Apartment , Manchester
Novotel Hotel, Warszawa
Hampton by Hilton, Gdansk
PGU Uzdrowiska, Polczyn Zdroj
Hidden Hotel, Paris
Green Mountain, Karpacz City
Best Western, Jurata
Hampton by Hilton, Lublin
Double Tree by Hilton, Warszawa
Sofitel Hotel , Warszawa

PROJECT REFERENCES

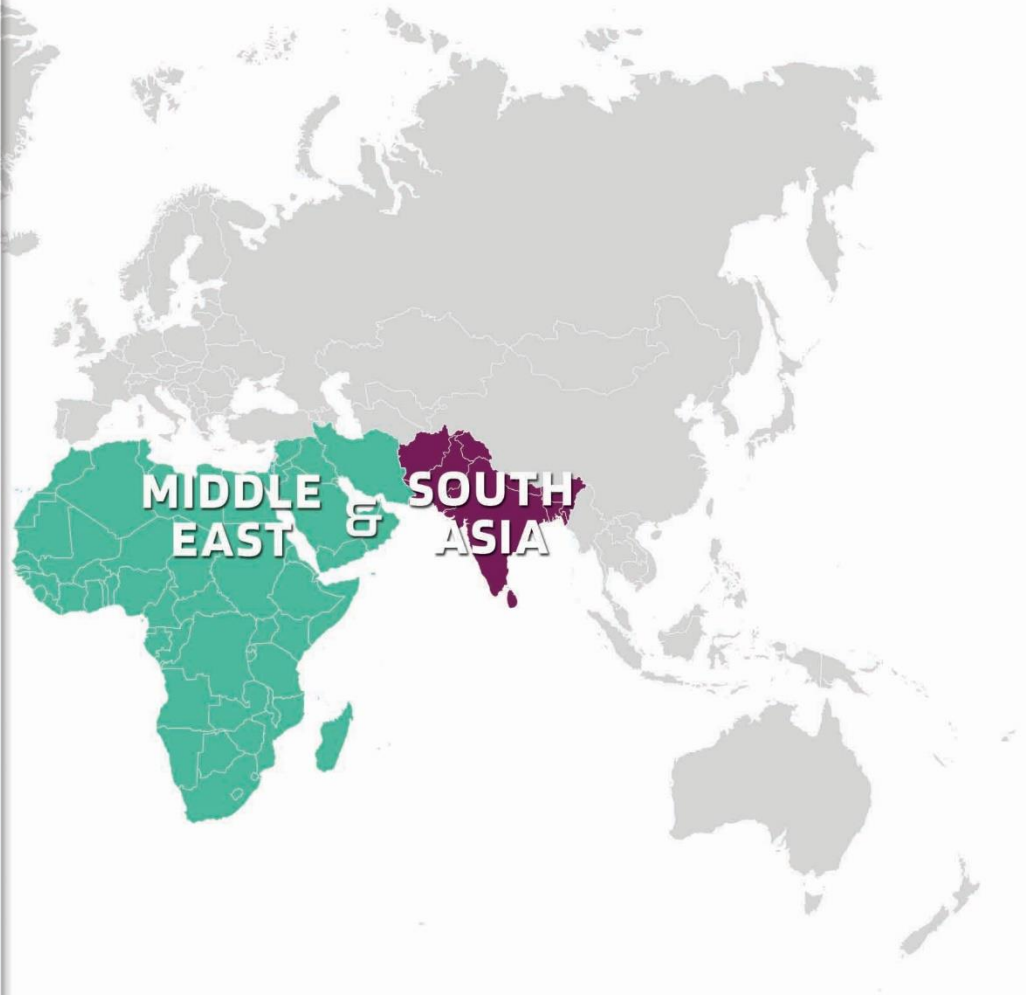


Taal Vista Hotel SM
Pico Sands SM
Crimson Alabang
Quest Clark
Le Meridien Hong Kong
Harbour Grand Kowloon
The Fullerton Ocean Park Hotel Hong Kong
Dorsett Tsuen Wan, Hong Kong
ARCA
Royal Park Hotel
Crimson Hotel, Mactan, Philippines
Courtyard by Marriot, Penang
Sofitel Saigon Plaza, Ho Chi Minh
Hilton Opera Hanoi
The Parisian Macao
Londoner Macao, Cotai Strip
W Hotel, Kuala Lumpur
Swiss Garden Hotel Group, Kuala Lumpur
Sands Macao, Largo de Monte Carlo
InternContinental Saigon, Ho Chi Minh
Resort World, Genting Highlands
Four Points Hotel, Penang
Rosewood Hong Kong, Tsimshatsui
F1 Hotel BGC, Metro Manila
Renaissance Riverside Saigon, Ho Chi Minh
JW Marriott Hanoi
Travelodge Hotel, Penang
Grand Lapa Macao
EQ Hotel, Kuala Lumpur
Movenpick Hotel, Kuala Lumpur
Grand Millenium Hotel, Kuala Lumpur
InterContinental Phu Quoc Long Beach Resort, Phu Quoc

Grand Hyatt Macao
Melia Hotel, Kuala Lumpur
Parkroyal Group of Hotels, Kuala Lumpur
Intercontinental Hotel, Kuala Lumpur
Villa Gold 3+4, Ninh Binh
Caravelle Saigon Hotel, Ho Chi Minh
Ocean Villas_Danang, Danang
Doubletree Hotel, Kuala Lumpur
Inside By Melia Saigon, Ho Chi Minh
Kerry Hotel, Hung Hom
Novotel Ha Long, Quang Ninh
Hilton Hotel, Kuala Lumpur
Pulman Hotel, Kuala Lumpur
Dusit Princess Moonrise Phu Quoc, Phu Quoc
Grand Dorset Hote, Kuala Lumpur
L'Azure Resort and Spa, Phu Quoc
Hanoi Hotel, Hanoi
Crimson Alabang, Cebu
Conrad Hong Kong, Admiralty
Four Seasons, Macao
Ovolo Group, Central
Four Points Chinatown, Kuala Lumpur
Wolo Hotel, Kuala Lumpur
Crowne Plaza Fudan, Shanghai
St. Regis Hong Kong
Quest Hotel, Cebu
Traders Hotel, Kuala Lumpur

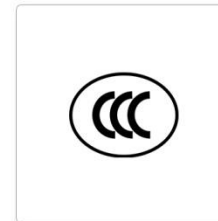
PROJECT REFERENCES

Mina Hotel and Residences	Trinco Blue by Cinnamon
Dusit Hotel & Suites	Metropolitan Hotel, Dubai
NH Hotels	Millennium Place, Dubai
Towers Rotana	Cinnamon Lakeside - Colombo
Rotana Navitas	Habtoor Grand, Dubai
Hyatt Centric	Earl's Regency, Kandy
St.Regis Polo, Dubai	Cinnamon Bey Beruwala
Bulgari Hotel, Dubai	Intercontinental, Doha
Heritence - Ahungalle	Airport Garden Hotel, Colombo
Armani Hotel, Dubai	Ellaidhoo by Cinnamon, Maldives
Mahaweli Rach - Colombo	Viceroy Palm Hotel, Dubai
Heritance - kandalama	Waldorf Astoria Palm, Dubai
Grand Hyatt, Muscat	Four Seasons, Karnataka
St Regis Hotel, Dubai	Crowne Plaza Hotel, Dubai
Westin Hotel, Dubai	Cinnamon Grand - Colombo
W Hotel, Dubai	Heritence Ayurveda
Cinnamon Wild Yala	Hikka Tranz by Cinnamon
Five Hotels, Dubai	Dukes Dubai
Heritance Tea Factory	Habarana Village by Cinnamon
Crowne Plaza, Doha	Swiss-Bellin, Muscat
Cinnamon Lodge Habarana	Sigiri Jungle
Eden Resort & Spa	Jumeirah Marasa Al Arab
Ranna 212	Waldorf Astoria Palm
Golden Pearl Hotel	Aloft
98 Acres	Element
Heritance - Negombo	
Gateway by Taj	
Kingsbury - Colombo	
Pyramid Continental Hotel, Juba, Sudan	
Holiday Inn - The Business Park, Doha	
Kempinski Gold Coast City, Ghana	
Crowne Plaza Doha - The Business Park	
Holiday Inn Doha - The Business Park	



OUR SAFETY CERTIFICATIONS

SAFETY IS OUR PRIORITY
World Standards



BUILDING ON SUCCESS

Growing The Global Brand

Emberton's growth has been an incredible story. The drive and desire to be better, for perpetual improvement, remains part of Emberton's DNA.

From training, to production and testing facilities, we continually re-invest in our people and our products. Relying on the principles and energy that have driven the brand's success so far, Emberton looks to the future with full of confidence.



INTELLECTUAL PROPERTY



TOUGH BOARD - Rugged & Durable; We have combined a rugged frame with heavy duty metal components and robotic welds to withstand guests' tough use.



DUAL SAFE - an organic, thermo-sensitive material, remarkably sensitive to abnormally high temperatures. Upon sensing critical heat levels, DUAL SAFE activates and the electrical current will be interrupted immediately and permanently.



WATER TANK TECHNOLOGY - Special anti-fracture water tank welding technique ensures a permanent seal to prevent water leakage.

OUR APPLIANCE LINES

Product Examples:



IRONING BOARDS



KETTLES



HAIRDRYERS



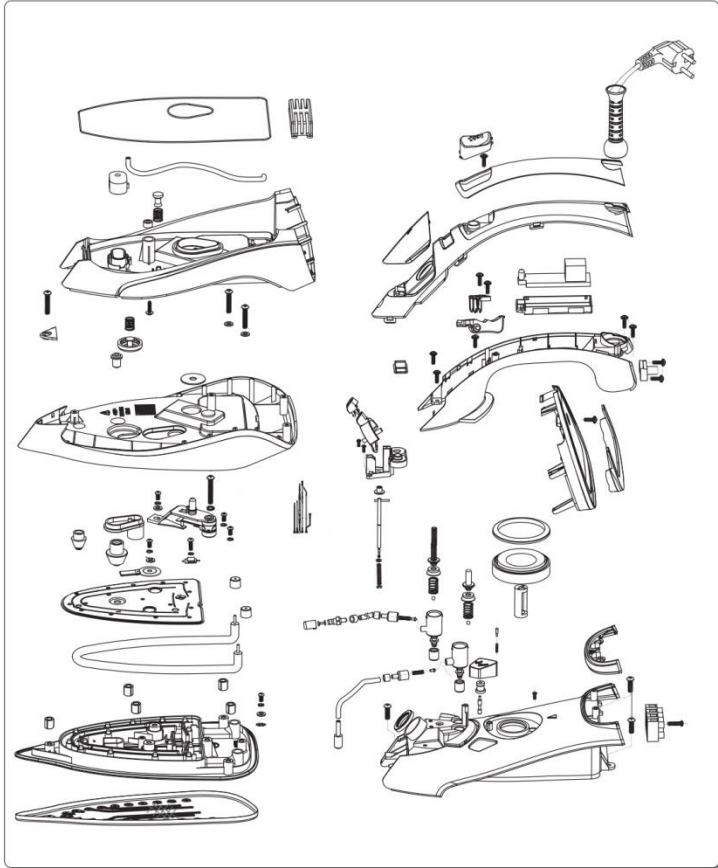
STEAM IRONS



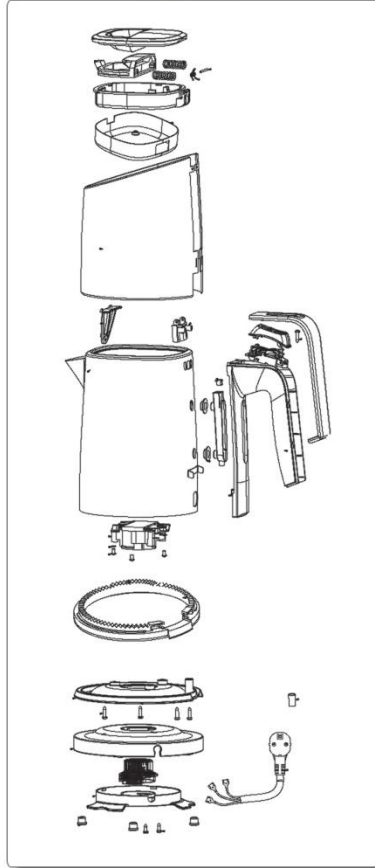
WELCOME TRAYS

DESIGN & DEVELOPMENT

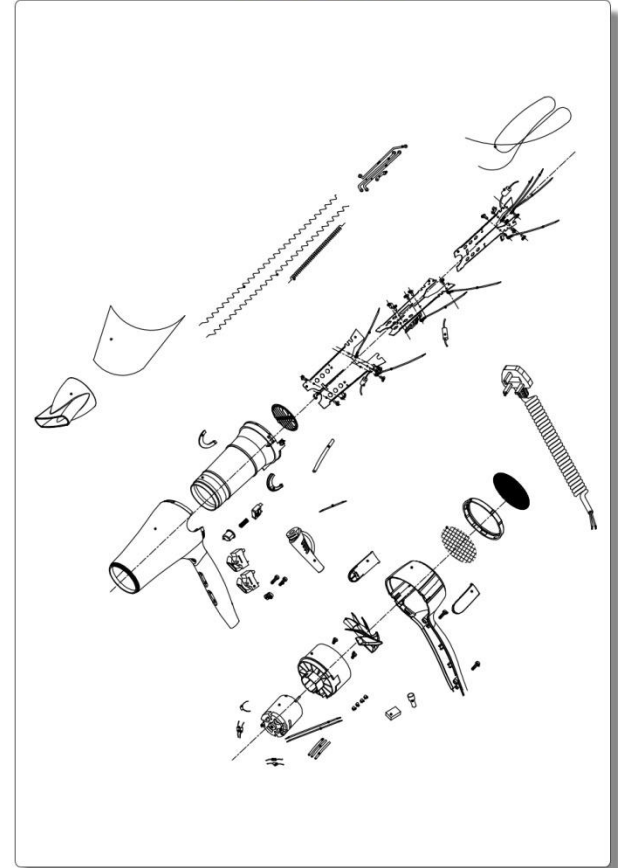
STEAM IRON



KETTLE



HAIRDRYER



PRODUCT & QUALITY CONTROL

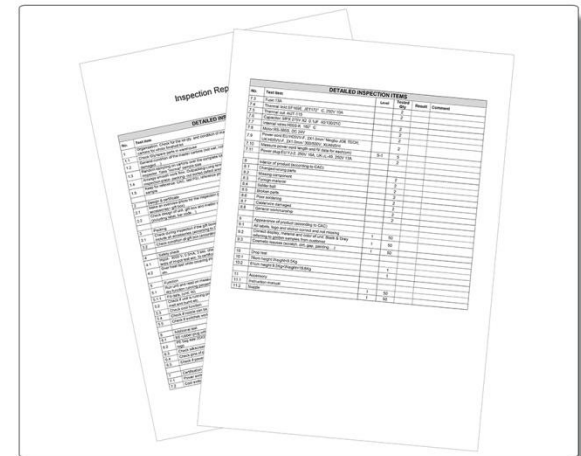
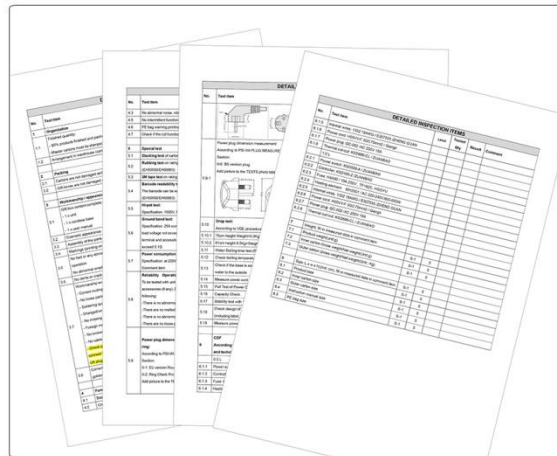
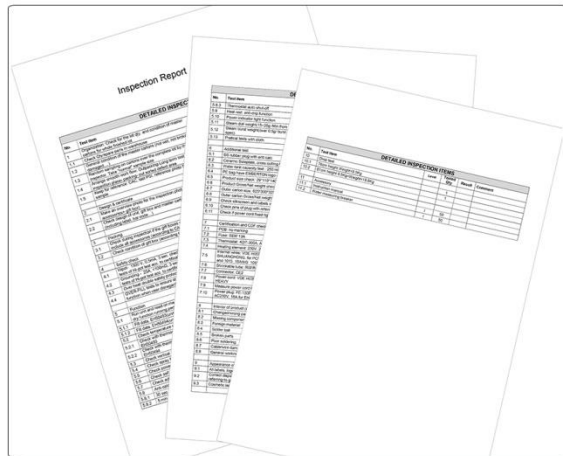
STEAM IRONS



KETTLES



HAIRDRYERS



GLOBAL DISTRIBUTION NETWORK



- EMBERTON OPERATION CENTRES
- AUTHORISED FULFILMENT CENTRES

CONTACTS

United Kingdom

Mountfield House, Mountfield Industrial Estate,
Mountfield Road, New Romney, Kent TN28 8LH,
England, United Kingdom.

Tel: +44 1797 361256 Fax: +44 01797 366722

Czech

Za Tratí 235, Chrášťany, 252 19 Czech Republic
Building C, ramp number 20

Tel. +420 727 888 170

UAE

SAIF Executive Office P8-06-34, Sharjah U.A.E.

P.O Box 513001, Sharjah, U.A.E

Tel. +971 56 260 6640

Poland

ul. Poematu 6/101

04-993 Warszawa

Poland

Tel. +48 22 299 29 16

German

Beuelsweg 9

50733 Köln, Deutschland

Tel: +49 221 2594 3342

China

ZhongYang DaSha 19 # Shuimen South Road Cixi,
Ningbo, China PC

Tel: +86 574 63202931

Hong Kong

Suite 811, Tsimshatsui Centre, East Wing,

66 Mody Road TST East Kowloon,

Hong Kong

Tel: +852 2268 6888

Fax: +852 2721 3881

Malaysia

19, Medan Istana 2, Bandar Ipoh Raya,

30000 Ipoh, Perak, Malaysia

Tel: +6 05 242 5707

Fax: +6 05 242 5481

E-mail: info@emberton.com

EMBERTON™

www.emberton.com
info@emberton.com